

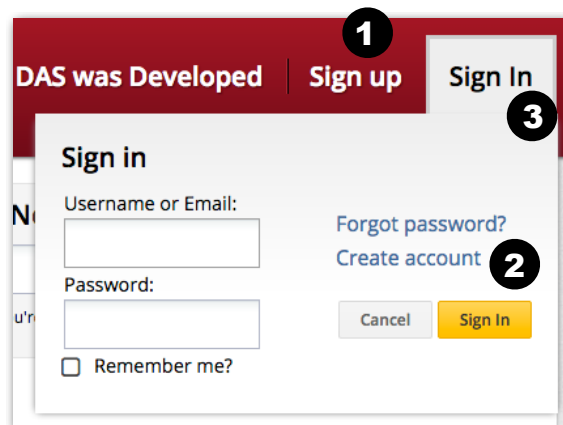
How To Use DAS - Quick Start

Registration

- go to www.decisionaid.systems
- click on *Sign Up* in the menu (1) or *Create Account* in the Sign In Box (2)
- fill out the Registration Form
- select stations (see steps below)

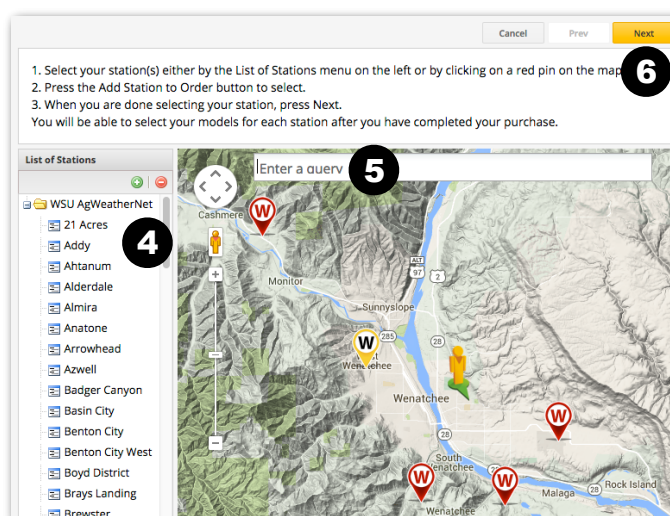
Sign in

- go to www.decisionaid.systems
- click *Sign In* (3)
- enter your username and password into the Sign In Box



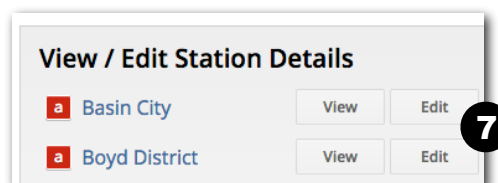
Add a station to your profile

- in the main menu bar go to *My Account* —> *Profile Settings*
- under *View/Edit Station Details* click on *Add Station*
- select AWN weather stations in the list (4) or search by address/ zipcode (5)
- click on the station's icon and *Add Station to Order*
- after selecting all stations of interest, click *Next* (6) to proceed to the subscription payment
- select crop, models and management preferences for each subscribed station



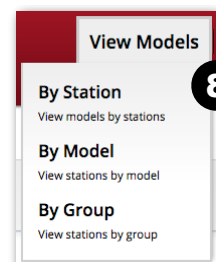
Edit a station in your profile

- go to *My Account* —> *Profile Settings*
- click on *Edit* next to a station (7) to make changes to crops, models, or management



Access and view the model output

- click on *View Models* and select a view option (8)
 - *By Station* - view all models for a particular station
 - *By Model* - view all stations for a particular model
 - *By Group* - set up and view custom groups of stations
- select a station or model of interest in the list on the left
- Model output features:
 - *Current Conditions*, accumulated degree-days, and *Management Recommendations* (9)
 - switch between organic and conventional management recommendations by clicking on *View Organic/Conventional* (10)
 - *Projected Forecast* from +1 to +42 days (11)
 - other features in the tabs include: (12)
 - *Charts, Data Table, Spray Guide, Weather Forecast, Comparison to Last Year,* and other model information



Basin City AWN Jump To Edit Station View Conventional **10**

Codling Moth **12**

Conditions | Charts | Data Table | Spray guide & MRL | Weather Forecast | Comparison to Last Year

Last Updated: 05/13/2015
 Degree days since January 1st. = 459
 (old: after biofix = 284 DD)

Projected Forecast :
 +42 days Wed Jun 24, 2015 : 1252 DD **11**

Conditions:
 10% of 1st summer generation CM adults should have emerged by this time. Egg hatch of the 2nd summer generation should occur at about 1300 DD (11 days), and peak adult flight should occur about 1615 DD.

Current Conditions:
 57% of CM adults have emerged and 6% eggs have hatched. Trap catch should peak around 535 DD.

Organic Management:
 If you applied applied oil at 375 DD, then the first larvicide treatment should be applied at 525 DD. Organic options for

Organic Management:
 Oil applied by 1375 DD will d

View Models | Historic Data | Spray Guide **13**

Access and view the spray guide

- select *Spray Guide* in the main menu **13** and select pest, crop, and crop stage **14** or click *View WSU Spray Guide* in the *Mini Spray Guide* tab **15**
- use *Filters* to select pesticides by practice and efficacy to other pests **16**
- *Effects on Natural Enemies* are shown as color gradients for each pesticide **17**
- click on a pesticide to view more details

Need help?

- in the main menu click on *Help Center* to view the *Video Tutorials* or search the *Online Manual* **18**
- contact us through the *Feedback* button on the right edge of the screen **19**

Home | News | Help Center **18**

Videos
Quick Start Guides

Online Manual
How to's and more

Feedback **19**

WSU Mini Spray Guide **15**

Possible **Conventional** materials for **Apple** crops.

Crop Type:
 Crop Stage:

[View WSU Spray Guide](#)

CM Granulosis Virus
Chlorantranilprole (Alta)
Methoxyfenozide (Intrep)
Spinetoram (Delegate 25)
Spinosad (Entrust 80W)
Thiacloprid (Calypto 4F)

WSU Online Spray Guide **14**

Spray guide information taken from the *WSU Crop Protection Guide*.
 Extended Natural Effects data provided by OPENED

Search:
 Pest:
 Crop:
 Crop Stage:

Practice Filter: All Organic **16**

Efficacy Filter: ARM CAMP CM ERM GAA LAC OBLR PLR RAA TSM WAA WAL WFT

Compare Materials: You have no materials to compare.

Ranking of Negative Pesticide Impacts on Natural Enemies: Low | Moderate | High

Effect ratings based on population growth impacts.

Results

acetamiprid + petroleum oil-summer
 Assail 70WP Compare

Efficacy
 High: CAMP, GAA, RAA, WAL, CM
 Moderate: CAMP, GAA, RAA, WAA, CM, WFT

Effects on Natural Enemies **17**

cyantranilprole
 Exirel Compare

Efficacy
 High: OBLR, CM, PLR
 Moderate:

Effects on Natural Enemies **17**

phosmet
 Imidan 70W Compare

Efficacy
 High:
 Moderate: CM

Effects on Natural Enemies **17**

If you have any questions, concerns or suggestions let us know. We're happy to help.

The WSU-DAS Team

last updated 10 February 2016